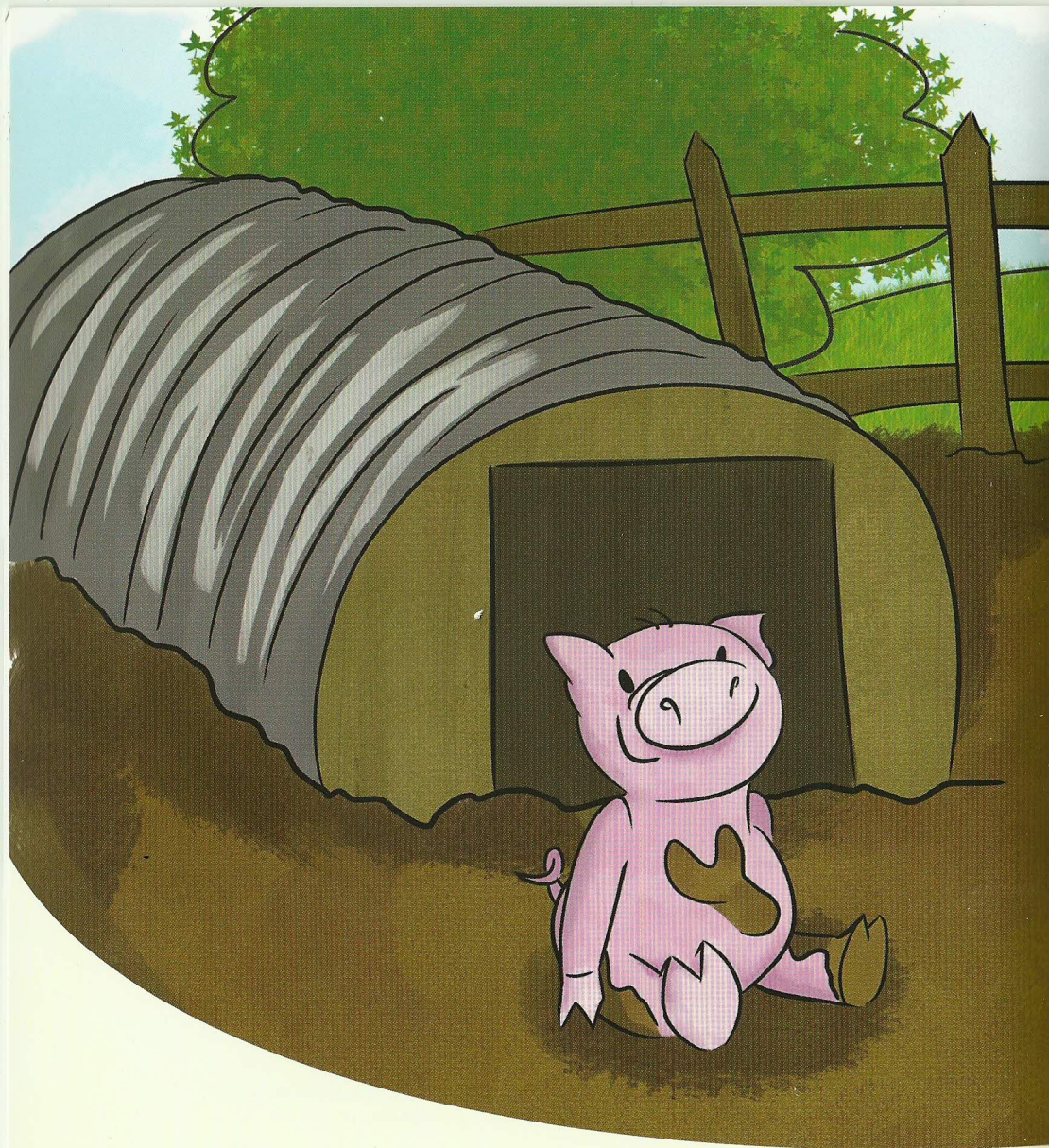


# Mici a Mali

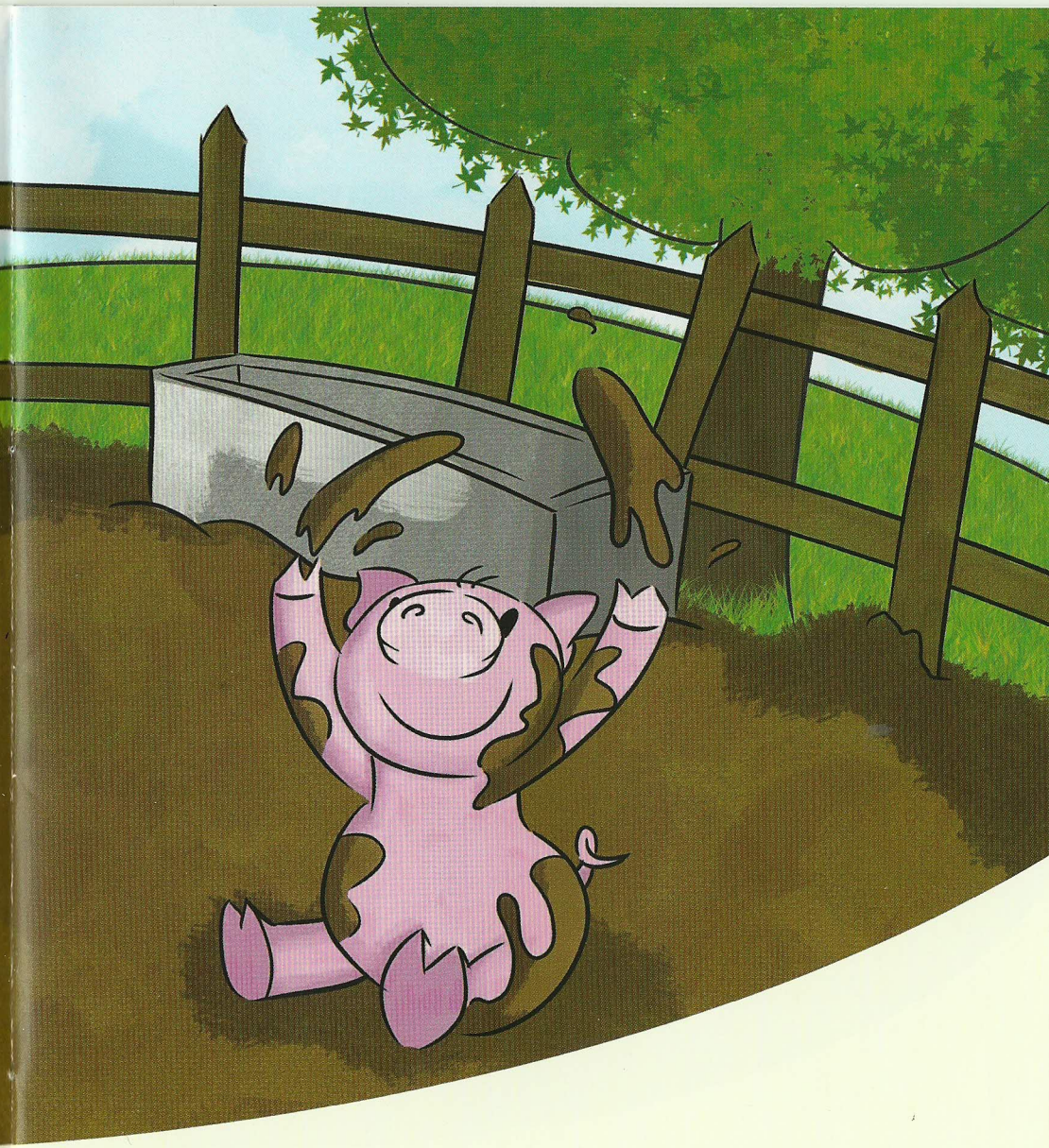


Tric 2  
a Chlic



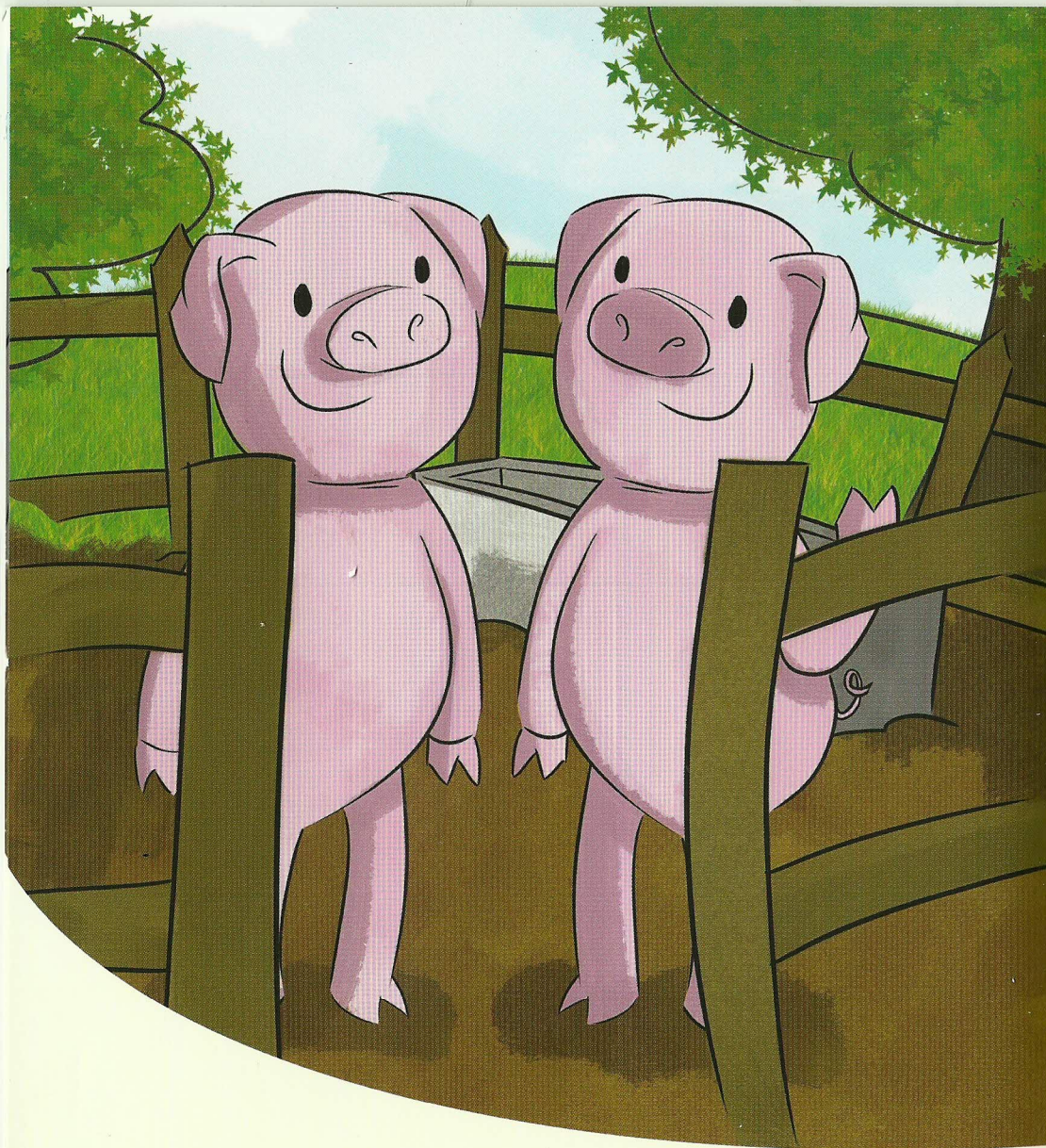
Aeth Mici a Mali am dro.

1



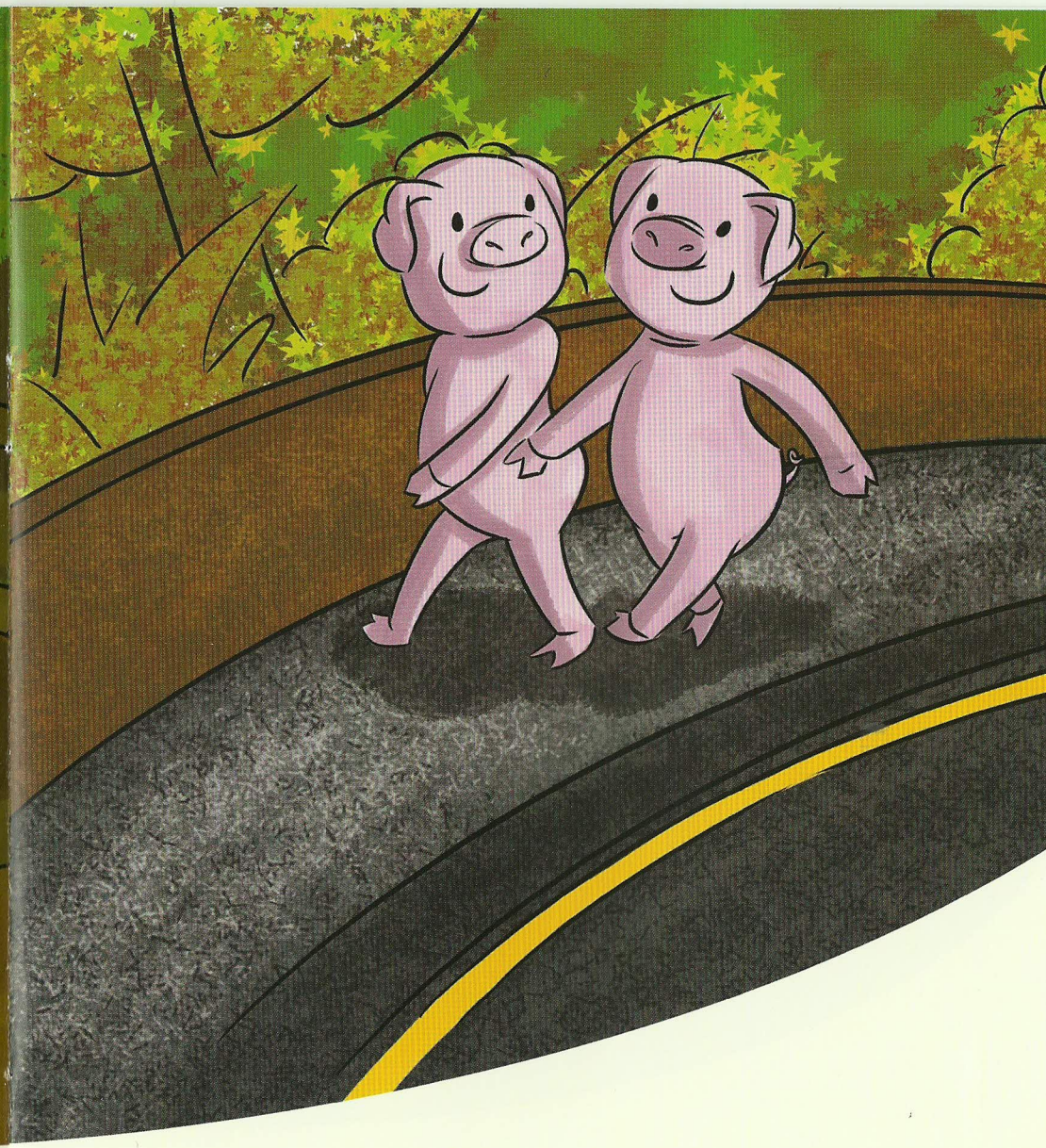
Aeth Mici a Mali ...

2



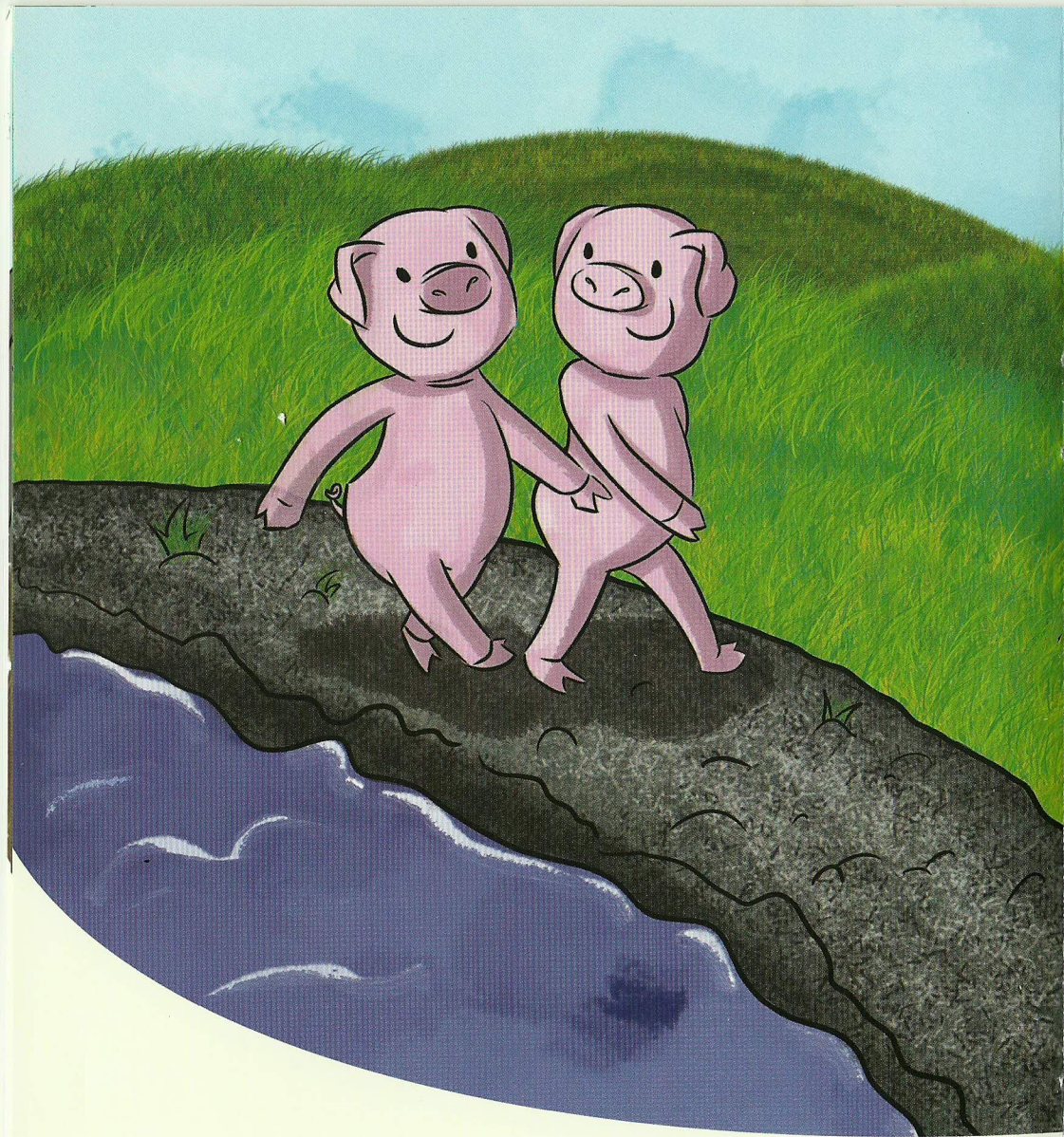
allan o'r twlc,

3



i lawr y ffordd,

4

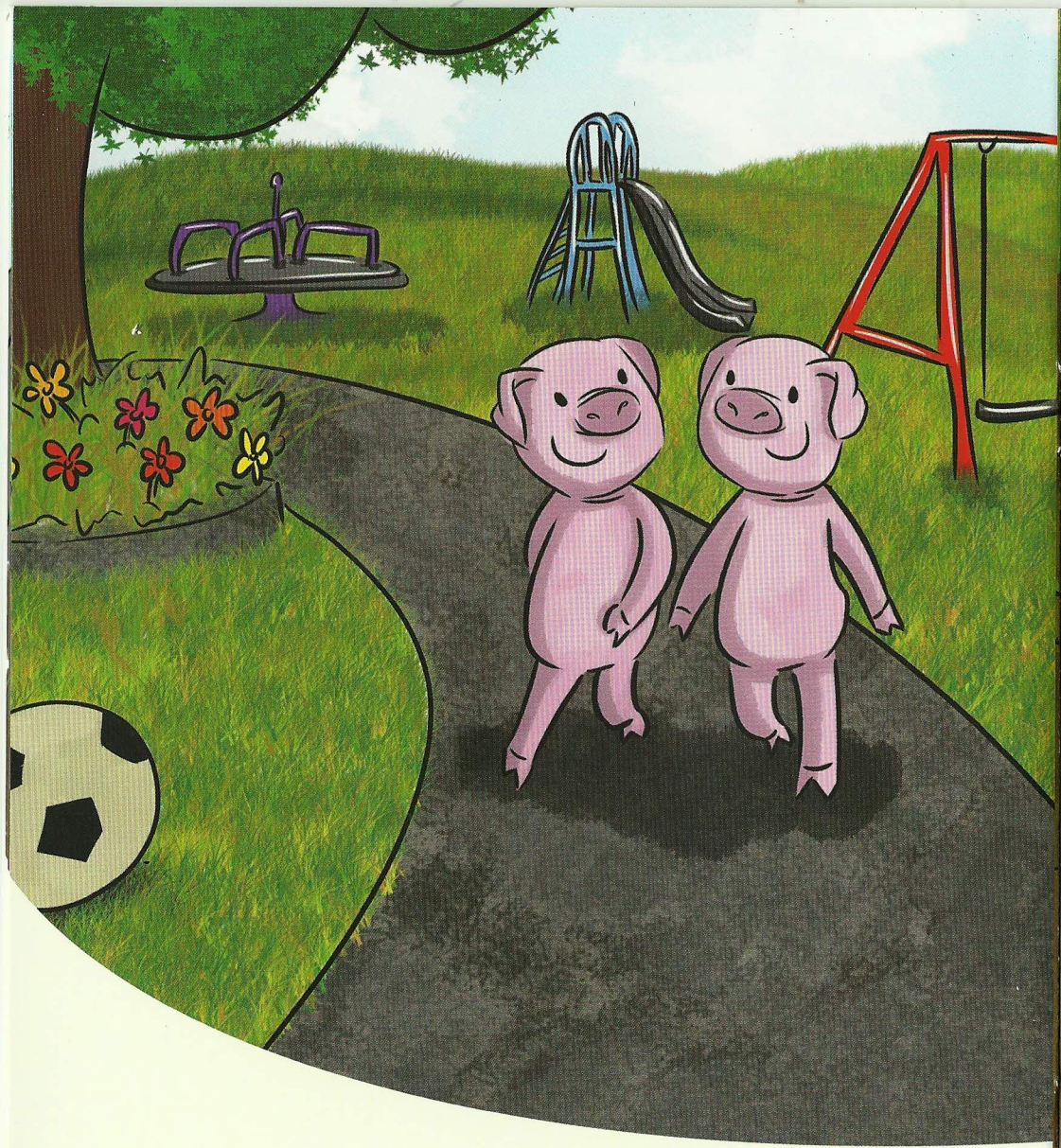


at yr afon,

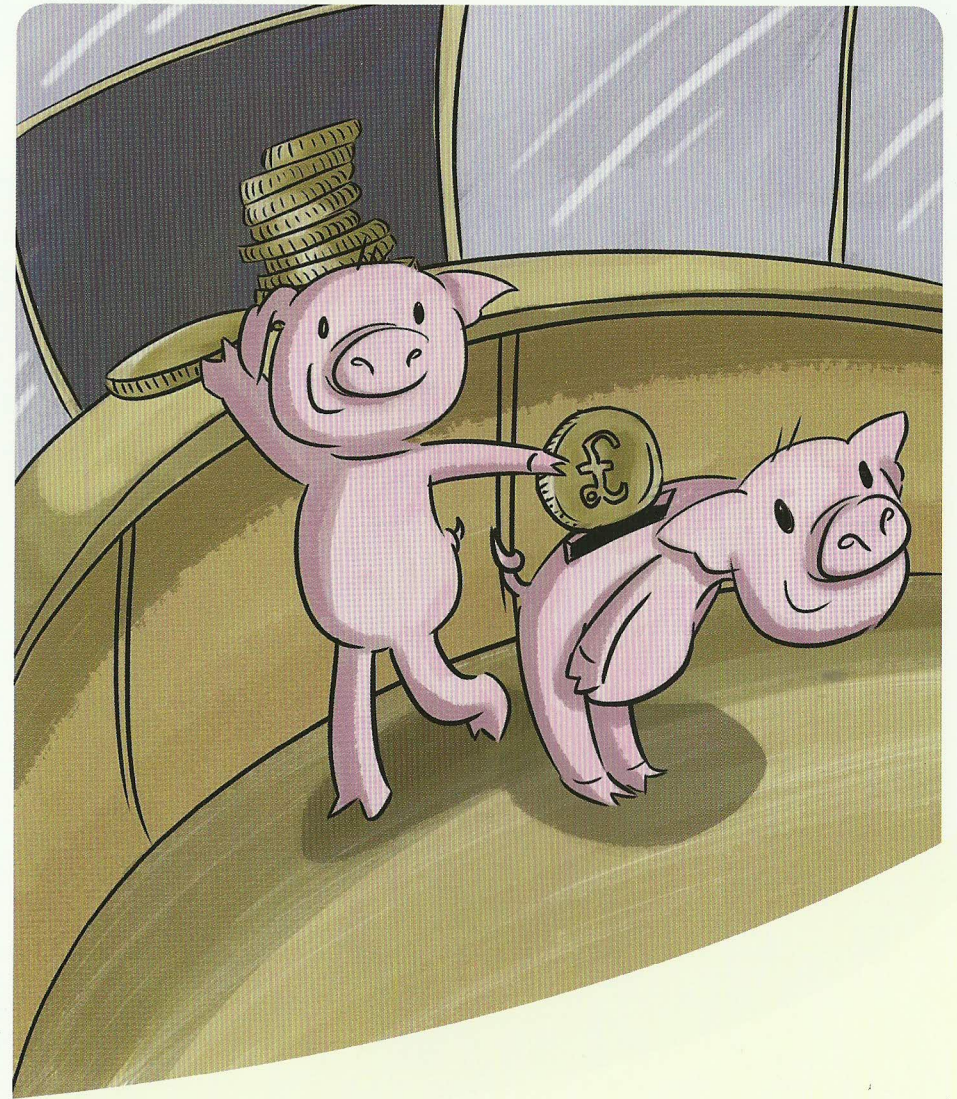


dros y bont

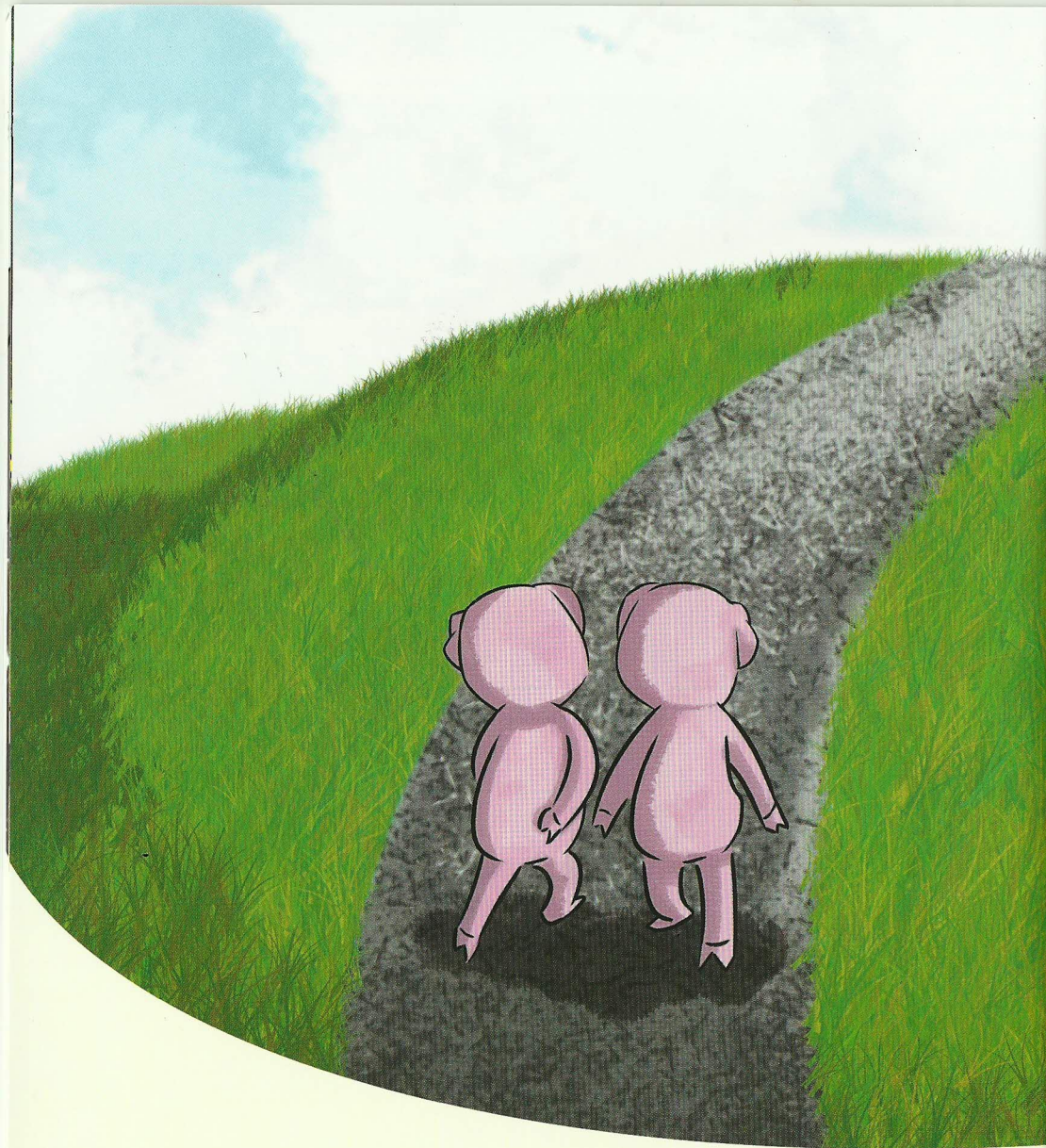




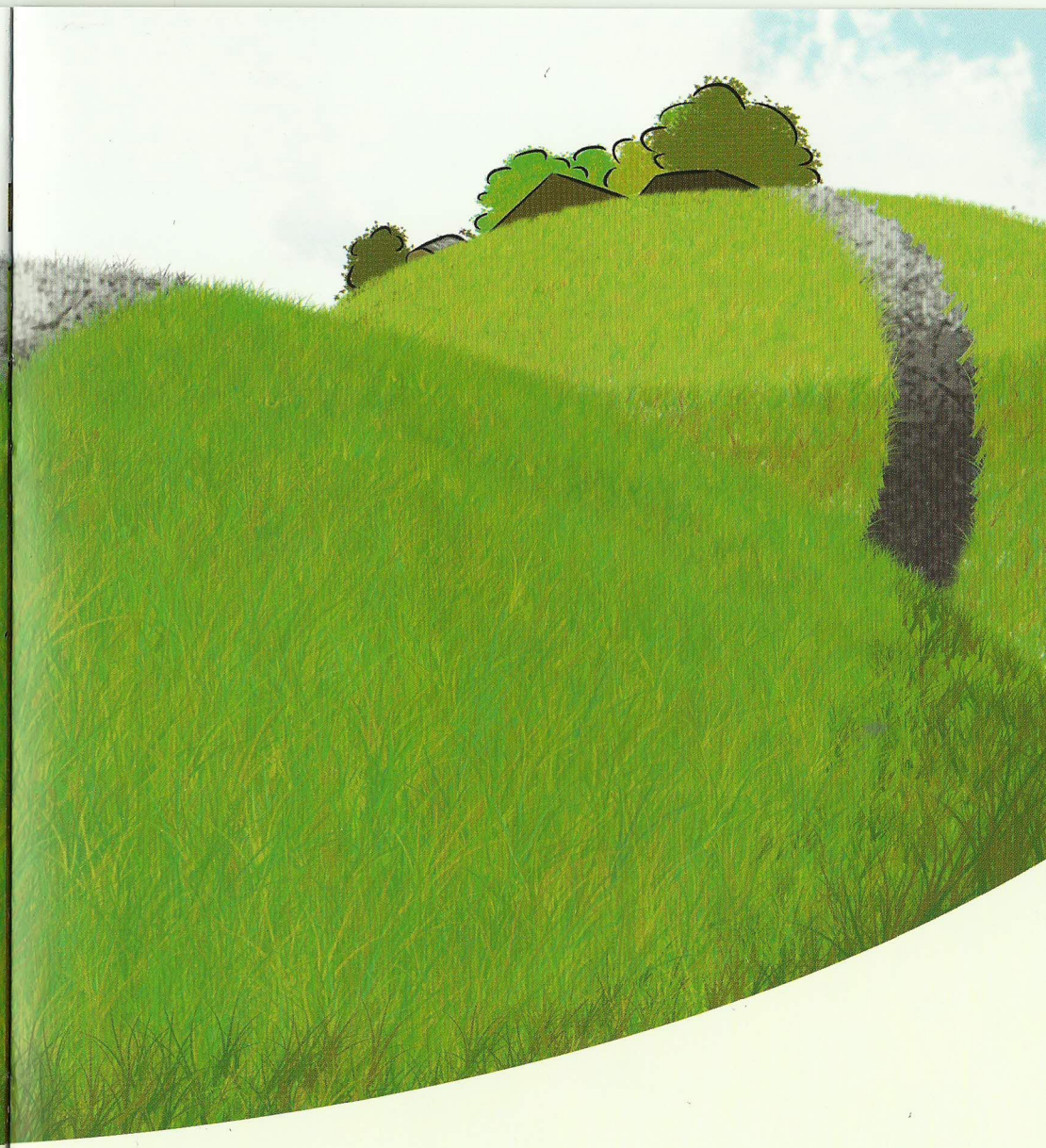
a thrwy'r parc.



Yna, nôl arian o'r banc,



lan y rhiw



ac



yn ôl i'r twlc  
ar y fferm.

